

Deliver Reliable Results  
with Maximum Uptime

# H60S

Hematology Analyzer



# ELEGANT DESIGN AS USUAL

At Edan, we are a new player in the IVD field, while we are well known around the world for the excellence of our medical products. We are a successor in hematology, whereas we are not a follower. We are, as USUAL, to provide professional service and trustable performance to reshape your experience.

We are on a journey to understand your needs, solve your challenges and provide a better solution. Our fundamental goal is to make sure our products truly meet your needs without generating an extra burden. And this is about design.

A good design includes everything, which influences the entire user experience. Our answer is Elegant Design as USUAL.

Within our Elegant Design concept, we are emphasizing five tenets to enhance your experience.

## USER

Design with user-oriented

## SERIAL

Different model tailored to your needs

## SPACE

Design to suit your surroundings

## LIFESPAN

Design for long product life

## OUTLINE

Design to simplify your operation

EDAN

&lt; Data Review



Result List

Result Details

Sample ID: 1

Patient ID:

Mode: CD+CRP

Patient Name:

Time: 2023-09-11 15:17:15

Age:

Para.	Result	Unit	Para.	Result	Unit	Para.	Result	Unit
WBC	6.53	10 <sup>9</sup> /L	RBC	5.12	10 <sup>12</sup> /L	PLT	176	10 <sup>9</sup> /L
NEU#	3.55	10 <sup>9</sup> /L	HGB	154	g/L	MPV	10.4	fL
NEU%	53.9	%	HCT	47.5	%	PDW	11.8	%
LYM#	2.11	10 <sup>9</sup> /L	MCV	92.8	fL	PCT	0.18	%
LYM%	32.4	%	MCH	30.1	pg	P-LCR	27.9	%
MON#	0.53	10 <sup>9</sup> /L	MCHC	324	g/L	P-LCC	49	10 <sup>9</sup> /L
MON%	8.2	%	RDW-CV	13.4	%	*ALY#	0.01	10 <sup>9</sup> /L
EOS#	0.33	10 <sup>9</sup> /L	RDW-SD	45.5	fL	*ALY%	0.2	%
EOS%	5.2	%	*NLR	1.68		*LIC#	0.00	10 <sup>9</sup> /L
BAS#	0.01	10 <sup>9</sup> /L	*PLR	83.51		*LIC%	0.0	%
BAS%	0.3	%	*MLR	0.00		*NRBC#	0.00	10 <sup>9</sup> /L
						*NRBC%	0.0	%

WBC Flag(s)

RBC Flag(s)

PLT Flag(s)

Previous

Next

Edit Result

Edit Info.

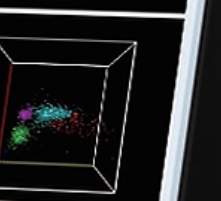
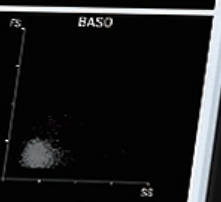
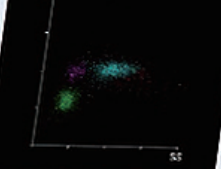
Check

Send LIS

Microsco...

Graph(1) Graph(2) Graph(3)

DIFF



Standby

admin 25.1°C

19:14  
2023-11-14

H60S

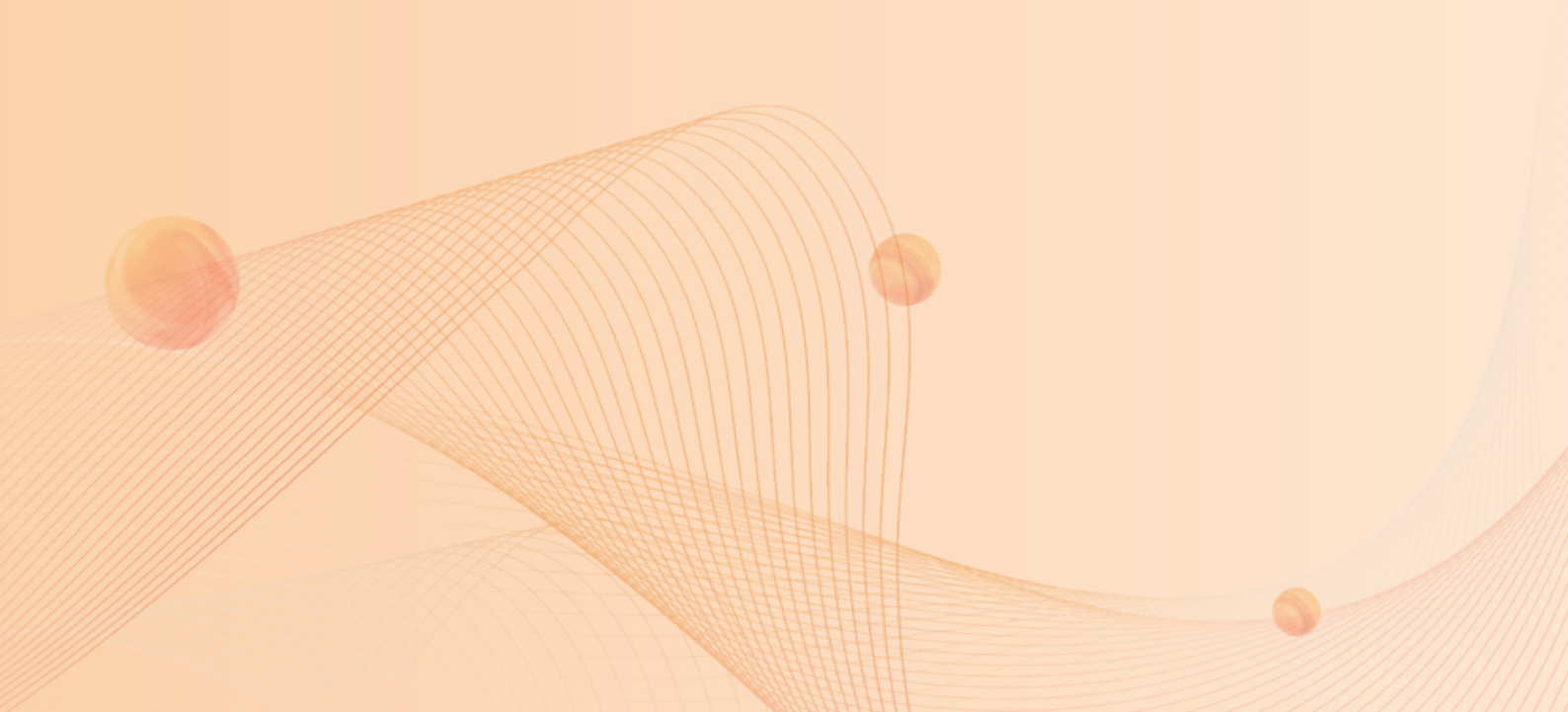
# H60 SERIES: BRIGHTEN YOUR HEMATOLOGY LIGHTEN YOUR WORK

People who work in the laboratory deserve great respect and attention. It's a challenging job with a high workload and fast response. Every day, with patients and physicians counting on you, you have no space for error and hardly have time to breathe, so you have to be focused at all times. Having the right instrument is the ultimate solution.

We invent the requirements and explore the pain points to develop a new concept in hematology. The hematology approach has been in the market for decades, but many challenges haven't been tackled. Adapted to the fundamental but significant appeal points, the Edan H60 series can well suit your needs.

The Edan H60 series are positioned in low to moderate volume laboratories, committed to lightening your work with an enjoyable experience. Equipped with an integrated, intuitive operation system, it brings a reliable system with clinical values and effective cost control. The Edan H60 series is tailored to you.

## FREE YOU WITH MAXIMUM UPTIME



# DETAILS THAT LIGHTEN YOUR WORK

Automatic rotation  
and recognition of sample ID



12-inch  
colorful touch screen

Reagent management  
via RFID card  
secure your reagent  
business



STAT position  
Easy switch from autoloader loader

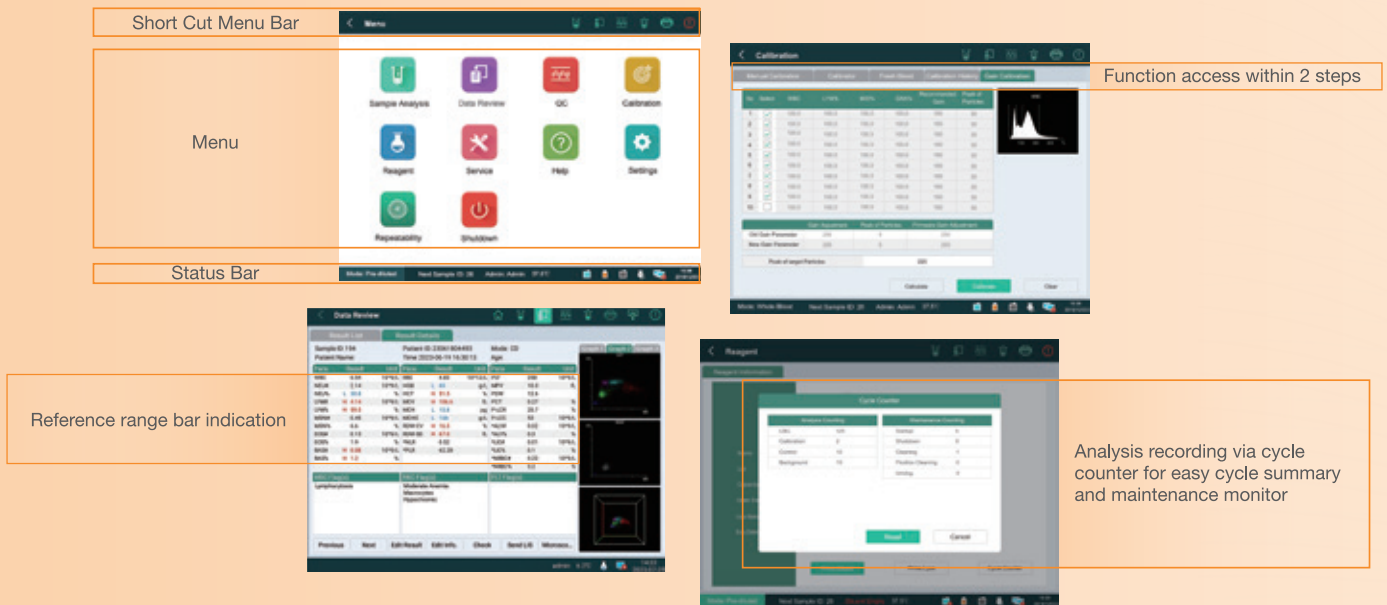
60 samples  
capacity autoloader  
with continuous loading



Various tube supported  
Incorrect mode selection  
prompt

- Vacuum tube
- 0.5ml/1.5ml centrifuge tube
- Microtainer

# INTUITIVE SYSTEM THAT SIMPLIFIES YOUR HANDLING



## The system that stands out

The H60S features a whole set of user-oriented functions that are hard to find elsewhere. Its android-based system has a similar experience as a smartphone – pleasure-to-operate and easy-to-use. You can get to any functionality within two steps. The 12-inch colorful touch screen makes working with H60S and viewing its results exceptionally straightforward.

## Outstanding graphic interface

The user interface is undoubtedly the most visible and best-appreciated feature of the H60 series. Different set-up views, each optimized for various user situations, facilitate routine use. The most common include a sample view showing classic graphs and all parameters within one page. The other sample view features the most practical reference bar display that indicates the results' status. The comprehensive information on the short-cut menu bar and status bar give you fast access to any primary function.

## Communicate and print like never before

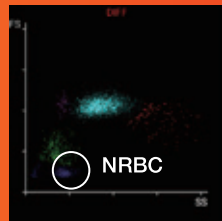
An integrated workstation with the HIS and LIS connections further streamlines analysis and reporting. Standardized HL7 protocol and storage capacity extends up to 100,000 easily accessible sample files. The print function has the most flexible options that allow you to print individual sample results and control tests, L-J graphs, or QC lists with any parameters selection.

# SENSITIVE FLAGGINGS THAT ASSIST YOUR INSIGHTS

## NRBC

NRBC PRESENCE FLAGGING

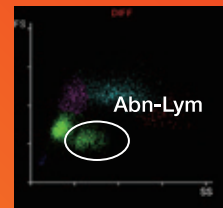
REMINDED TO CORRECT WHITE BLOOD CELL COUNTS BY SMEAR



## ALY

ABNORMAL LYMPHOCYTE FLAGGING

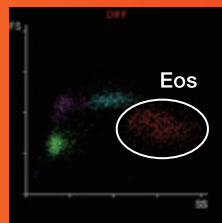
SUSPICIOUS OF VARIANT LYMPHOCYTES AND MALIGNANT LYMPHOCYTES



## EOSINOPHILIA

HIGH SPECIFICITY ON EOSINOPHIL

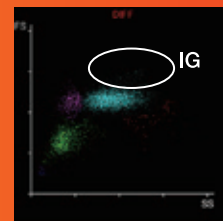
GREAT DIFFERENTIATION ON EOSINOPHILIA SAMPLES



## IG

IG PRESENCE FLAGGING ASSESSMENT OF SEPSIS AND INFLAMMATION

COMPRISED OF METAMYELOCYTES, MYELOCYTES & PROMYELOCYTES

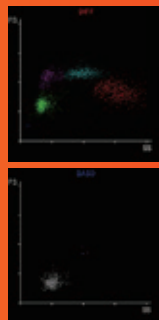


## DIFF

10 DIFF PARAMETERS

HIGH CLUSTERING OF 5-DIFF

TWO 2D SCATTERGRAMS  
HIGH SENSITIVITY FLAGGING



DIFF

BASO



## Specification

Parameters <span>NEW</span>		
25 reportable parameters:	WBC, Lym%, Mon%, Neu%, Bas%, Eos%, Lym#, Mon#, Neu#, Eos#, Bas#, RBC, HGB HCT, MCV, MCH, MCHC, RDW-CV, RDW-SD, PLT, MPV, PDW, PCT, P-LCR, P-LCC.	
8 research parameters:	LIC%, LIC#, ALY%, ALY#, <span>NRBC%</span> , <span>NRBC#</span> , NLR,PLR	
3 histograms:	<span>WBC</span> , RBC, PLT	
1 3D scattergram:	DIFF	
4 2D scattergram:	DIFF, BASO	
Performance		
Parameter	Linearity Range	Precision ( CV% )
WBC (10 <sup>9</sup> /L)	0.0-500.0	≤3.0% (3.50-7.00) ≤2.5% (7.01-15.00)
RBC (10 <sup>12</sup> /L)	0.0-8.5	≤1.5% (3.5-6.5)
HGB (g/L)	0-250	≤1.5% (100-180)
PLT (10 <sup>9</sup> /L)	0-4000	≤5.0% (100-500)
MCV (fL)		≤1.0% (70-120)
Principles		Throughput
Tri-angle laser flow cytometry analysis for WBC, DIFF and BASO counting Electrical impedance method for RBC, PLT counting Cyanide-free reagent for HGB with colorimetric method		60 samples per hour
Sample Volume		Interface
Whole blood mode	16 μL	12.1 inch colorful touch screen
Capillary whole blood mode	16 μL	
Pre-diluted mode	20 μL	
Reagent		Control and Calibrator
HD600 Diluent 20L		ED-60D, ED-CAL PLUS
HL600 Lyse 500mL/1L		
HC310 Cleaner 50mL		
Operating Environment		Data Storage Capacity
Temperature: 15°C~32°C; Humidity: 30% RH~85% RH; Air pressure: 70 kPa~106 kPa		100, 000 results including results and histograms 60 QC files (100 data per file)
		Dimension and Weight
		626.5 (D)×565 (W)×580(H) Weight: 42.1kg



A world of potential

### Global Headquarters:

Edan Instruments, Inc. | 15 Jinhui Road, Pingshan District, Shenzhen  
518122 P.R. China | +86.755.26898326 | [www.edan.com](http://www.edan.com) | [info@edan.com](mailto:info@edan.com)

### U.S. and Canada inquiries:

EDAN Diagnostics, Inc. | 9918 Via Pasar, San Diego, CA 92126  
+1.858.750.3066 | [www.edandiagnostics.com](http://www.edandiagnostics.com) | [edan-info@edandiagnostics.com](mailto:edan-info@edandiagnostics.com)

© Edan Instruments, Inc. All rights reserved. Features and specifications are subject to change without prior notice. No reproduction, copy or transmission may be made without written permission.  
Not all products or features are available in all countries, contact Edan for local availability.



ENG-IVD-H60S  
V1.7-20241119