

# Provides Critical Testing Anytime, Anywhere

**i15** Blood Gas and  
Chemistry Analyzer



# i15 Blood Gas and Chemistry Analyzer

LAN/Wi-Fi connectivity



Build-in Printer and USB Storage



Printer



Cartridge



Interface



USB Storage



Power Switch



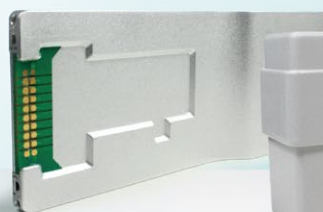
Traffic Lights

## i15 Quality Control System

Triple Guarantee the Result



i15 Video



## Portable, lightweight

- Capable to run 50 samples with fully-charged battery
- Diagnose at the point of care, patient side, out in the field or exam room

## Easy, Quick and Convenient

- Zero maintenance
- Minimize hands on time and training requirement
- Auto-sampling
- Report is ready within one minute after sample aspiration

## Accurate and Reliable

- Innovative microchip liquid control technology and micro-sensor multifunction membrane technology
- High sensitivity and accuracy
- Calibrator, Control and Electronic simulator to TRIPLE guarantee the RESULTS!

## Flexible Data Management

- Acquire patients' information via barcode/QR code
- Up to 10,000 patient data storage
- 4 USB ports and LAN/WiFi for data management
- Optional data management software

## Multi-parameter cartridge

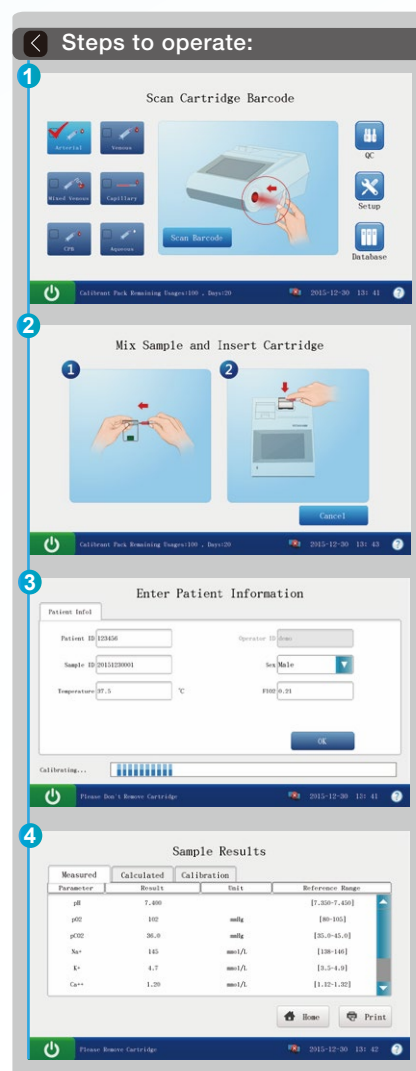
- Multi popular time-sensitive parameters come in one cartridge, including ABG, electrolytes and metabolites
- Single-use cartridge avoids contamination
- Room temperature storage with long shelf-life



Portable and lightweight



Touch screen with built-in multimedia tutorials



## Variety of test Cartridges

	pH	pCO <sub>2</sub>	pO <sub>2</sub>	Na	K	Cl	Ca	Hct	Glu	Lac	Approval
Microsample BG3/BG3	•	•	•	•	•	•	•	•	•	•	CE
Microsample BG8/BG8	•	•	•	•	•	•	•	•	•	•	CE
Microsample BG4/BG4	•	•	•	•	•	•	•	•	•	•	CE
Microsample BG9/BG9	•	•	•	•	•	•	•	•	•	•	CE
Microsample BG10/BG10	•	•	•	•	•	•	•	•	•	•	CE
Microsample BC4/BC4	•	•	•	•	•	•	•	•	•	•	CE
Microsample SC4	•	•	•	•	•	•	•	•	•	•	

Calculated values: cH+, HCO<sub>3</sub>-act, HCO<sub>3</sub>-std, BE(ecf), BE(B), BB(B), ctCO<sub>2</sub>, sO<sub>2</sub>(est), Ca++(7.4), AnGap, tHb(est), pO<sub>2</sub>(A-a), pO<sub>2</sub>(a/a), RI, pO<sub>2</sub>/FIO<sub>2</sub>, cH+(T), pH(T), pCO<sub>2</sub>(T), pO<sub>2</sub>(T), pO<sub>2</sub>(A-a)(T), pO<sub>2</sub>(a/a)(T), RI(T), pO<sub>2</sub>(T)/FIO<sub>2</sub>, mOsm

Parameter	Linearity	Resolution	Measurement Method
pH (pH units)	6.5 – 7.8	0.001	Potentiometric sensor
pO <sub>2</sub> (mmHg)	10 - 700	0.1	Amperometric sensor
pCO <sub>2</sub> (mmHg)	10 - 150	0.1	Potentiometric sensor
Na (mmol/L)	100 - 180	0.1	Potentiometric sensor
K (mmol/L)	2.0 - 9.0	0.01	Potentiometric sensor
Ca (mmol/L)	0.25 - 2.5	0.01	Potentiometric sensor
Cl (mmol/L)	65 - 140	0.1	Potentiometric sensor
Glu (mg/dL or mmol/L)	20 - 700 / 1.1 - 38.9	1 / 0.1	Amperometric sensor
Lac (mg/dL or mmol/L)	2.7 - 180.2 / 0.3 - 20	0.1 / 0.01	Amperometric sensor
Hct (%PCV or Fraction)	10 - 72 / 0.10 - 0.72	1% / 0.01	Conductance sensor

## Specification

Throughput	Results in 1 minute after sample aspiration
Sample volume	140µl / 80µl
Quality control	3 or 5 levels QC, External electronic simulator
Display	7-inch color LCD Display, 800*480
Interface	4 x USB 2.0 host, 1 x RS232, WLAN
Input device	Touch screen and barcode scanner
Power supply	100~240VAC, 50/60Hz
Battery	5000mAh rechargeable lithium-ion battery, 50 samples continuous testing
Dimensions (W*H*D)	315*238*153 mm
Weight	3.65 KG ( include battery )
Operation Environment	10°C-31°C; %RH: 25%-80%; 57-106.6 KPa



### Global Headquarters:

Edan Instruments, Inc. | 15 Jinhui Road, Pingshan District, Shenzhen  
518122 P.R. China | +86.755.26898326 | [www.edan.com](http://www.edan.com) | [info@edan.com](mailto:info@edan.com)

### U.S. and Canada inquiries:

EDAN Diagnostics, Inc. | 9918 Via Pasar, San Diego, CA 92126  
+1.858.750.3066 | [www.edandiagnostics.com](http://www.edandiagnostics.com) | [edan-info@edandiagnostics.com](mailto:edan-info@edandiagnostics.com)

© Edan Instruments, Inc. All rights reserved. Features and specifications are subject to change without prior notice. No reproduction, copy or transmission may be made without written permission. Not all products or features are available in all countries, contact Edan for local availability.



ENG-POCT-i15  
V2.9-20240701